

AIP SUPPLEMENT - SUOMI / FINLAND

Aeronautical Information Service

www.ais.fi

Fintraffic ANS, PL 157, FI-01531 VANTAA, ais@fintraffic.fi

AIP SUP NR
106 / 2026

AIRAC

WEF
09 JUL 2026

TAMPERE-PIRKKALAN LENTOASEMA (EFTP), LENTOMENETELMÄT AJALLA 9.7. - 3.9.2026

REF AIP SUP 103/2026

Alla luetellut lentomenetelmät on julkaistu ajalle **9.7. - 3.9.2026** tämän Supplementin liitteinä.

EFTP OMNIDIRECTIONAL DEPARTURES RWY 06 **korvaa tilapäisesti AIP:ssa julkaistun** EFTP OMNIDIRECTIONAL DEPARTURES RWY 06 -menetelmän.

TAMPERE-PIRKKALA AERODROME (EFTP), FLIGHT PROCEDURES FROM 09 JUL TO 03 SEP 2026

REF AIP SUP 103/2026

The flight procedures listed below have been published **for the period of 09 JUL to 03 SEP 2026** as Appendices to this Supplement.

EFTP OMNIDIRECTIONAL DEPARTURES RWY 06 **temporarily replace** the EFTP OMNIDIRECTIONAL DEPARTURES RWY 06 **procedure published in AIP**.

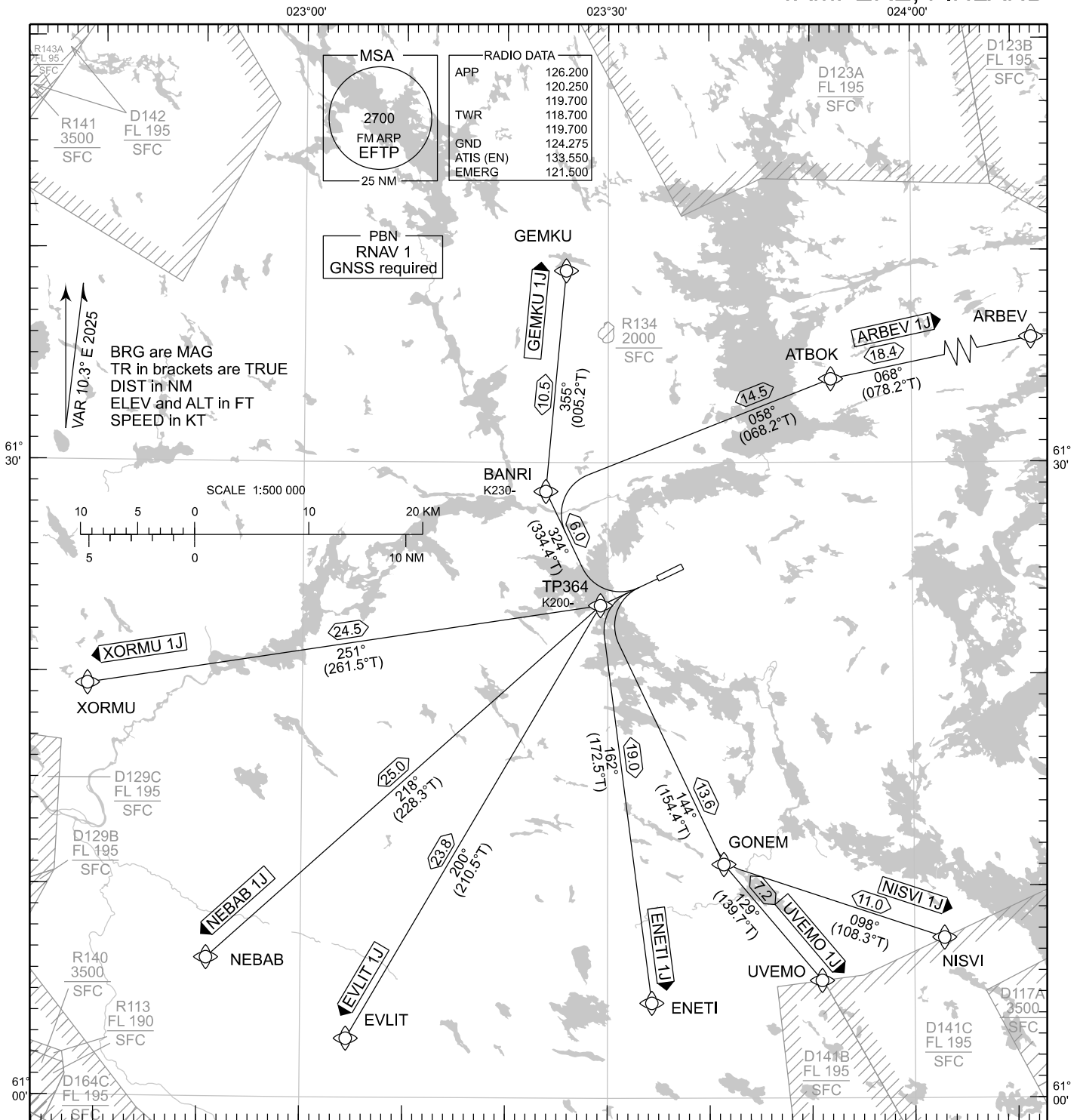
LIITTEET / APPENDICES:

1. EFTP RNAV SID RWY 24C
2. EFTP OMNIDIRECTIONAL DEPARTURES
3. EFTP RNAV STAR RWY 24C
4. EFTP RNP RWY 24C

STANDARD DEPARTURE CHART
INSTRUMENT (SID) - ICAO

TRANSITION ALT
5000

RNAV SID RWY 24C
TAMPERE-PIRKKALA AERODROME
TAMPERE, FINLAND



RNAV SID RWY 24C

ARBEV 1J ENETI 1J EVLIT 1J GEMKU 1J NEBAB 1J NISVI 1J UVEMO 1J XORMU 1J

DME/DME OPS: NOT SUPPORTED

ROUTES: RNAV PROC CODING ON THE VERSO OF THE CHART

SQUAWK: WHEN LINING UP SQUAWK THE ASSIGNED CODE

INITIAL CLIMB: MNM TURNING ALTITUDE ACCORDING TO RTE CODING.
CLOSE-IN OBSTACLES EXIST, SEE EFTP AD 2.10 - 5

RADIO CONTACT: MAINTAIN TWR FREQ UNTIL 1500 FT, THEN CONTACT PIRKKALA RADAR FREQ 126.200

NOISE ABATEMENT: AFTER TAKE-OFF CLIMB AS RAPIDLY AS PRACTICABLE TO AT LEAST 2000 FT ABOVE AD ELEV
PUBLISHED SID ROUTES ARE ALSO MINIMUM NOISE ROUTINGS

AREA MNM ALT: SEE AMA INDEX, AIP ENR 6.1 - 3

CPDLC: EXPECT FIRST CPDLC DATA LINK AUTHORITY TO BE EFIN

EFTP RNAV SID RWY 24C										
RTE NAV SPEC	SEQ NR	P/T	WPT		MAG	GEO TR	DIST NM	Turn Direction	Constraints	
			ID	Flyover					LVL	Speed
ARBEV 1J RNAV 1	010	CA	-	-	234°	244.3°T	-		A790+	
	020	DF	TP364	-	-	-	-			K200-
	030	TF	BANRI	-	324°	334.4°T	6.0	R		K230-
	040	TF	ATBOK	-	058°	068.2°T	14.5			
	050	TF	ARBEV	-	068°	078.2°T	18.4			
ENETI 1J RNAV 1	010	CA	-	-	234°	244.3°T	-		A790+	
	020	DF	TP364	-	-	-	-			K200-
	030	TF	ENETI	-	162°	172.5°T	19.0			
EVLIT 1J RNAV 1	010	CA	-	-	234°	244.3°T	-		A790+	
	020	DF	TP364	-	-	-	-			K200-
	030	TF	EVLIT	-	200°	210.5°T	23.8			
GEMKU 1J RNAV 1	010	CA	-	-	234°	244.3°T	-		A790+	
	020	DF	TP364	-	-	-	-			K200-
	030	TF	BANRI	-	324°	334.4°T	6.0	R		K230-
	040	TF	GEMKU	-	355°	005.2°T	10.5			
NEBAB 1J RNAV 1	010	CA	-	-	234°	244.3°T	-		A790+	
	020	DF	TP364	-	-	-	-			K200-
	030	TF	NEBAB	-	218°	228.3°T	25.0			
NISVI 1J RNAV 1	010	CA	-	-	234°	244.3°T	-		A790+	
	020	DF	TP364	-	-	-	-			K200-
	030	TF	GONEM	-	144°	154.4°T	13.6	L		
	040	TF	NISVI	-	098°	108.3°T	11.0			
UVEMO 1J RNAV 1	010	CA	-	-	234°	244.3°T	-		A790+	
	020	DF	TP364	-	-	-	-			K200-
	030	TF	GONEM	-	144°	154.4°T	13.6			
	040	TF	UVEMO	-	129°	139.7°T	7.2			
XORMU 1J RNAV 1	010	CA	-	-	234°	244.3°T	-		A790+	
	020	DF	TP364	-	-	-	-			K200-
	030	TF	XORMU	-	251°	261.5°T	24.5			

WPT COORD

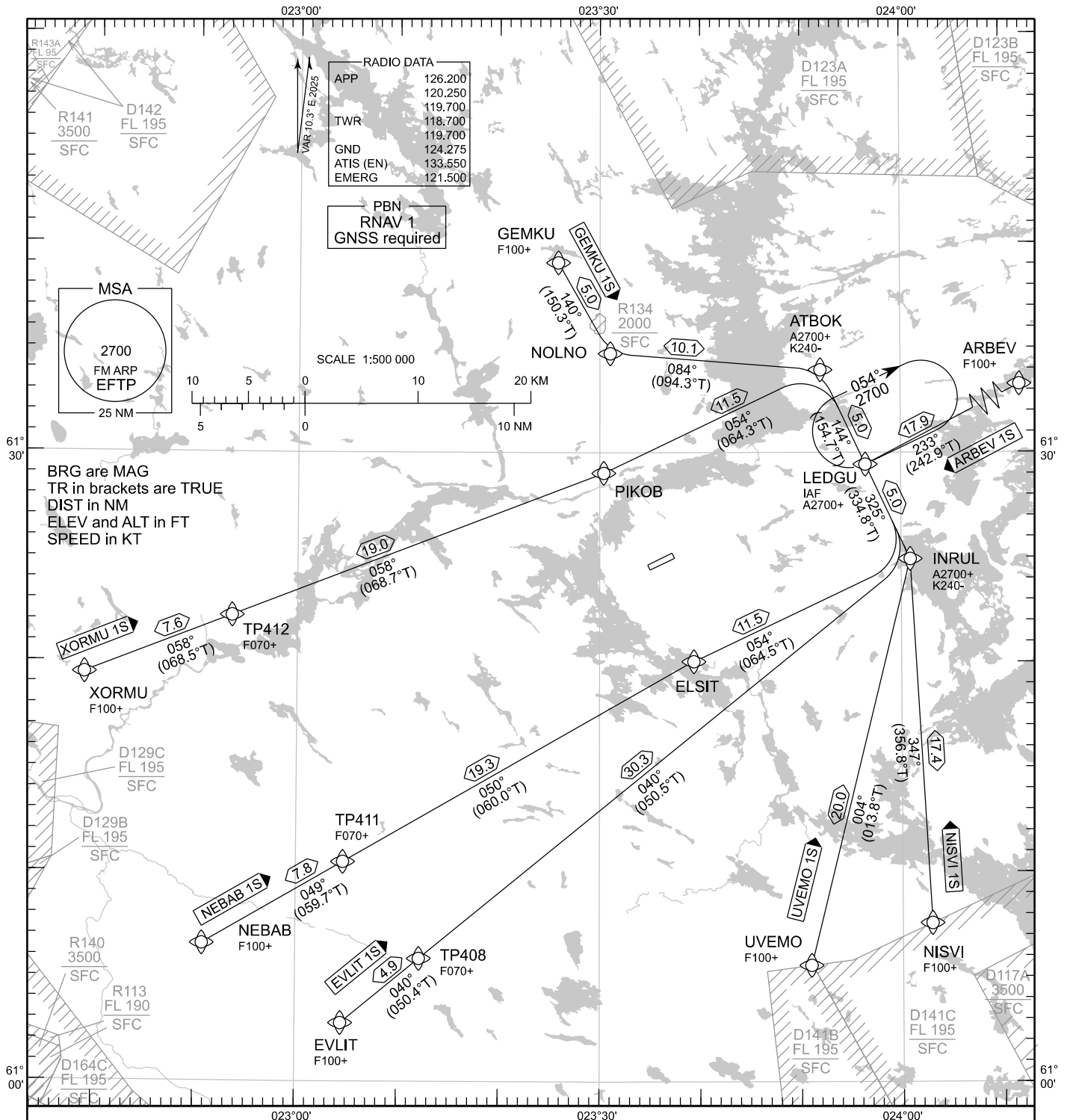
SEE PAGE EFTP AD 2.15 - 1

EFTP OMNIDIRECTIONAL DEPARTURES				
RWY	PROC	Controlling OBST		
		Phase	ELEV FT	BRG GEO / DIST NM
06	Climb straight ahead until MNM turning ALT 890 FT. Note 1: Close-in obst exist, total number 5. Note 2: Published close-in obst not considered in PDG.	PDG	NIL	
		TNA	637	052° / 3.92 NM FM THR 06 612656.2N 0234119.8E
24C	Climb straight ahead until MNM turning ALT 790 FT. Note 1: Close-in obst exist, total number 2. Note 2: Published close-in obst not considered in PDG.	PDG	NIL	
		TNA	NIL	

ADDITIONAL INFORMATION FOR ALL RUNWAYS	
SQUAWK	WHEN LINING UP SQUAWK THE ASSIGNED CODE
NOISE ABATEMENT	AFTER TAKE-OFF CLIMB AS RAPIDLY AS PRACTICABLE TO AT LEAST 2000 FT ABOVE AD ELEV

EFTP RWY 06 CLOSE-IN OBSTACLES		
NR	COORD	ELEV FT
1.	612506.8N 0233824.9E	459
2.	612506.2N 0233819.9E	454
3.	612506.2N 0233817.8E	451
4.	612502.1N 0233723.2E	430
5.	612509.8N 0233721.2E	404

EFTP RWY 24C CLOSE-IN OBSTACLES		
NR	COORD	ELEV FT
1.	612435.6N 0233440.0E	443
2.	612434.9N 0233442.6E	418



RNAV STAR RWY 24C

ARBEV 1S EVLIT 1S GEMKU 1S NEBAB 1S NISVI 1S UVEMO 1S XORMU 1S

DME/DME OPS:	NOT SUPPORTED	RCF:	SELECT TRANSPONDER CODE 7600
ROUTES:	RNAV PROC CODING ON THE VERSO OF THE CHART ATC WILL GIVE DESCENT CLEARANCES		RNAV STAR HAS BEEN GIVEN AND ACKNOWLEDGED: FOLLOW THE STAR TO THE RESPECTIVE RWY AND EXECUTE IAP AND LAND
WPT CONSTRAINTS:	ALT / FL / SPEED CONSTRAINTS MUST ALWAYS BE FOLLOWED AS PUBLISHED UNLESS EXPLICITLY CANCELLED BY ATC		DURING RADAR VECTORING BEFORE IAF: IN ACCORDANCE WITH THE RULES OF THE AIR
CD OPS:	BY ATC CLR IF TFC PERMITS. PLAN CD PATH ACCORDING TO STAR	AREA MNM ALT:	SEE AMA INDEX, AIP ENR 6.1 - 3
NOISE ABATEMENT:	AVOID OVERFLYING THE CITY OF TAMPERE BELOW 2000		

EFTP RNAV STAR RWY 24C										
RTE NAV SPEC	SEQ NR	P/T	WPT		MAG	GEO TR	DIST NM	Constraints		
			ID	Flyover				LVL	LVL	Speed
ARBEV 1S RNAV 1	010	IF	ARBEV	-	-	-	-	F100+		
	020	TF	LEDGU	-	233°	242.9°T	17.9	A2700+		
EVLIT 1S RNAV 1	010	IF	EVLIT	-	-	-	-	F100+		
	020	TF	TP408	-	040°	050.4°T	4.9	F070+		
	030	TF	INRUL	-	040°	050.5°T	30.3	A2700+		K240-
	040	TF	LEDGU	-	325°	334.8°T	5.0	A2700+		
GEMKU 1S RNAV 1	010	IF	GEMKU	-	-	-	-	F100+		
	020	TF	NOLNO	-	140°	150.3°T	5.0			
	030	TF	ATBOK	-	084°	094.3°T	10.1	A2700+		K240-
	040	TF	LEDGU	-	144°	154.7°T	5.0	A2700+		
NEBAB 1S RNAV 1	010	IF	NEBAB	-	-	-	-	F100+		
	020	TF	TP411	-	049°	059.7°T	7.8	F070+		
	030	TF	ELSIT	-	050°	060.0°T	19.3			
	040	TF	INRUL	-	054°	064.5°T	11.5	A2700+		K240-
	050	TF	LEDGU	-	325°	334.8°T	5.0	A2700+		
NISVI 1S RNAV 1	010	IF	NISVI	-	-	-	-	F100+		
	020	TF	INRUL	-	347°	356.8°T	17.4	A2700+		K240-
	030	TF	LEDGU	-	325°	334.8°T	5.0	A2700+		
UVEMO 1S RNAV 1	010	IF	UVEMO	-	-	-	-	F100+		
	020	TF	INRUL	-	004°	013.8°T	20.0	A2700+		K240-
	030	TF	LEDGU	-	325°	334.8°T	5.0	A2700+		
XORMU 1S RNAV 1	010	IF	XORMU	-	-	-	-	F100+		
	020	TF	TP412	-	058°	068.5°T	7.6	F070+		
	030	TF	PIKOB	-	058°	068.7°T	19.0			
	040	TF	ATBOK	-	054°	064.3°T	11.5	A2700+		K240-
	050	TF	LEDGU	-	144°	154.7°T	5.0	A2700+		

RNAV Holdings

ID	INBD TR	INBD MAG	Turn Direction	Speed	MNM HLDG LVL	TIME	DIST NM
LEDGU	244.5°T	234°	Right	K230-	A2700	1 MIN	-

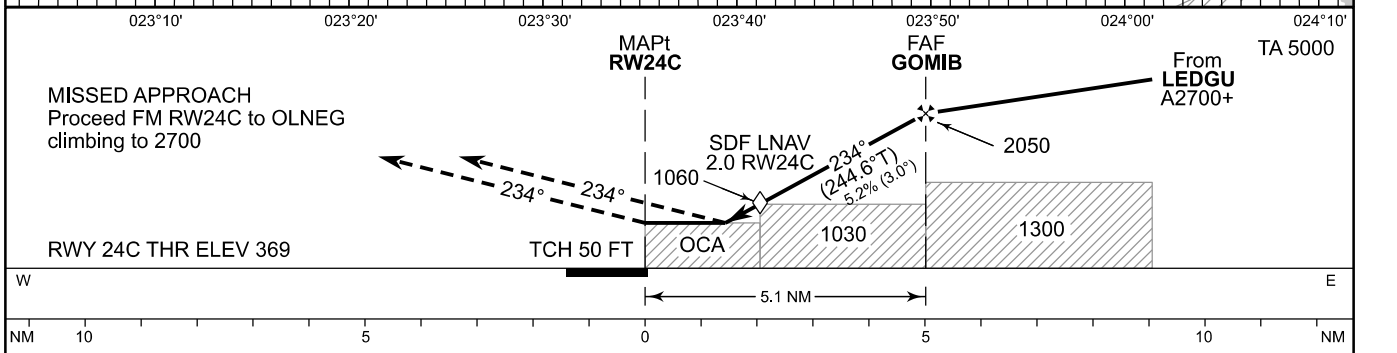
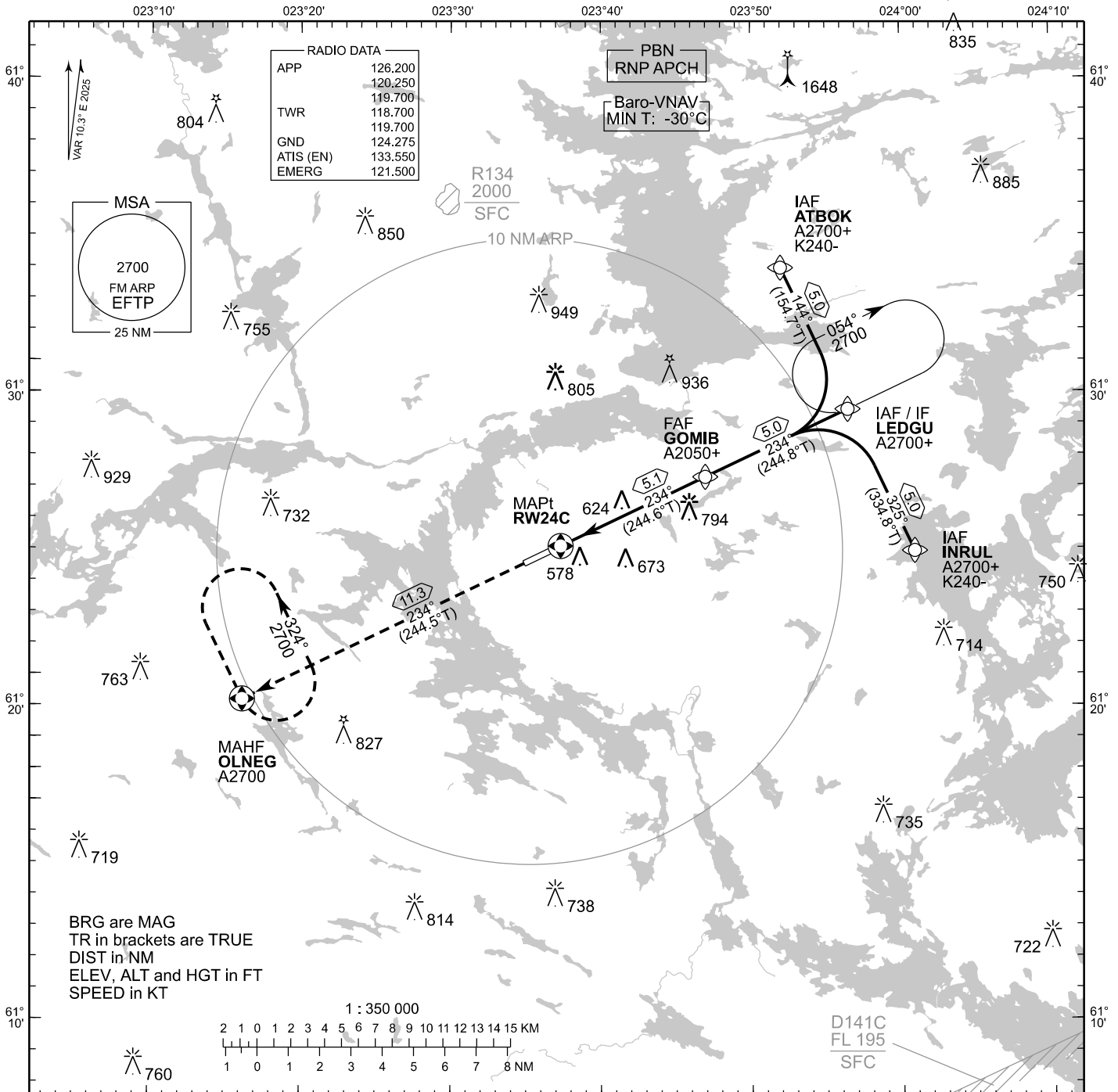
WPT COORD

SEE PAGE EFTP AD 2.15 - 1

**INSTRUMENT
APPROACH CHART - ICAO**

ELEV 391 FT
HEIGHTS RELATED TO
THR RWY 24C ELEV 369 FT

RNP RWY 24C
TAMPERE-PIRKKALA AERODROME
TAMPERE, FINLAND



OCA (H)	A	B	C	D
LNAV/VNAV	639 (271)	651 (283)	661 (293)	670 (302)
LNAV	870 (510)			
Circling	880 (490)	980 (580)	1190 (800)	1200 (810)

DIST FM THR	2.0 NM	3.0 NM	4.0 NM	
Altitude (Height)	1060 (690)	1370 (1010)	1690 (1320)	
	kt	90	100	120
		140	160	
FAF - MAPt 5.1 NM	min:sec	3:25	3:04	2:34
		2:12	1:55	
Rate of descent	ft/min	480	530	640
		740	850	

Timing not authorized for defining the MAPt

EFTP RNP RWY 24C										
PROC ID NAV SPEC	SEQ NR	P/T	WPT			MAG	GEO TR	DIST NM	Constraints	
			ID	Type	Flyover				LVL	Speed
H24C INRUL RNP APCH	005	IF	INRUL	IAF	-	325°	334.8°T	5.0	A2700+	K240-
	010	TF	LEDGU	IF	-				A2700+	
	020	TF	GOMIB	FAF	-	234°	244.8°T	5.0	A2050+	
	030	TF	RW24C	MAPt	Y	234°	244.6°T	5.1		
	040	TF	OLNEG	MAHF	Y	234°	244.5°T	11.3	A2700	

EFTP RNP RWY 24C										
PROC ID NAV SPEC	SEQ NR	P/T	WPT			MAG	GEO TR	DIST NM	Constraints	
			ID	Type	Flyover				LVL	Speed
H24C LEDGU RNP APCH	010	IF	LEDGU	IAF/IF	-	234°	244.8°T	5.0	A2700+	
	020	TF	GOMIB	FAF	-				A2050+	
	030	TF	RW24C	MAPt	Y	234°	244.6°T	5.1		
	040	TF	OLNEG	MAHF	Y	234°	244.5°T	11.3	A2700	

EFTP RNP RWY 24C										
PROC ID NAV SPEC	SEQ NR	P/T	WPT			MAG	GEO TR	DIST NM	Constraints	
			ID	Type	Flyover				LVL	Speed
H24C ATBOK RNP APCH	005	IF	ATBOK	IAF	-	144°	154.7°T	5.0	A2700+	K240-
	010	TF	LEDGU	IF	-				A2700+	
	020	TF	GOMIB	FAF	-	234°	244.8°T	5.0	A2050+	
	030	TF	RW24C	MAPt	Y	234°	244.6°T	5.1		
	040	TF	OLNEG	MAHF	Y	234°	244.5°T	11.3	A2700	

RNAV Holdings							
ID	INBD TR	INBD MAG	Turn Direction	Speed	MNM HLDG LVL	TIME	DIST NM
LEDGU	244.5°T	234°	Right	K230-	A2700	1 MIN	-
OLNEG	154.1°T	144°	Left	K230-	A2700	1 MIN	-

WPT COORD	
ID	COORD
INRUL	612455.60N 0240053.65E
ATBOK	613356.73N 0235159.78E
LEDGU	612926.24N 0235627.36E
GOMIB	612717.29N 0234657.52E
RW24C	612505.55N 0233719.65E
OLNEG	612012.64N 0231610.21E

FINAL APPROACH PARAMETERS			
LNAV Gradient	Baro-VNAV		TCH
	VPA	MNM T	
5.24 % (3.00°)	3.00°	-30°C	50 FT