

# AIP SUPPLEMENT - SUOMI / FINLAND

Aeronautical Information Service

www.ais.fi

Fintraffic ANS, PL 157, FI-01531 VANTAA, ais@fintraffic.fi

AIP SUP NR  
**080 / 2026**

**AIRAC**

**WEF**  
**11 JUN 2026**

## TAMPERE-PIRKKALAN LENTOASEMA (EFTP), LENTOMENETELMÄT AJALLA 11.6. - 6.8.2026

REF AIP SUP 077/2026

Alla luetellut lentomenetelmät on julkaistu ajalle **11.6. - 6.8.2026** tämän supplementin liitteinä.

EFTP OMNIDIRECTIONAL DEPARTURES RWY 24 **korvaa tilapäisesti AIP:ssa julkaistun** EFTP OMNIDIRECTIONAL DEPARTURES RWY 24 -menetelmän.

## TAMPERE-PIRKKALA AERODROME (EFTP), FLIGHT PROCEDURES FROM 11 JUN TO 06 AUG 2026

REF AIP SUP 077/2026

The flight procedures listed below have been published **for the period of 11 JUN to 06 AUG 2026** as Appendices to this supplement.

EFTP OMNIDIRECTIONAL DEPARTURES RWY 24 **temporarily replace** the EFTP OMNIDIRECTIONAL DEPARTURES RWY 24 **procedure published in AIP**.

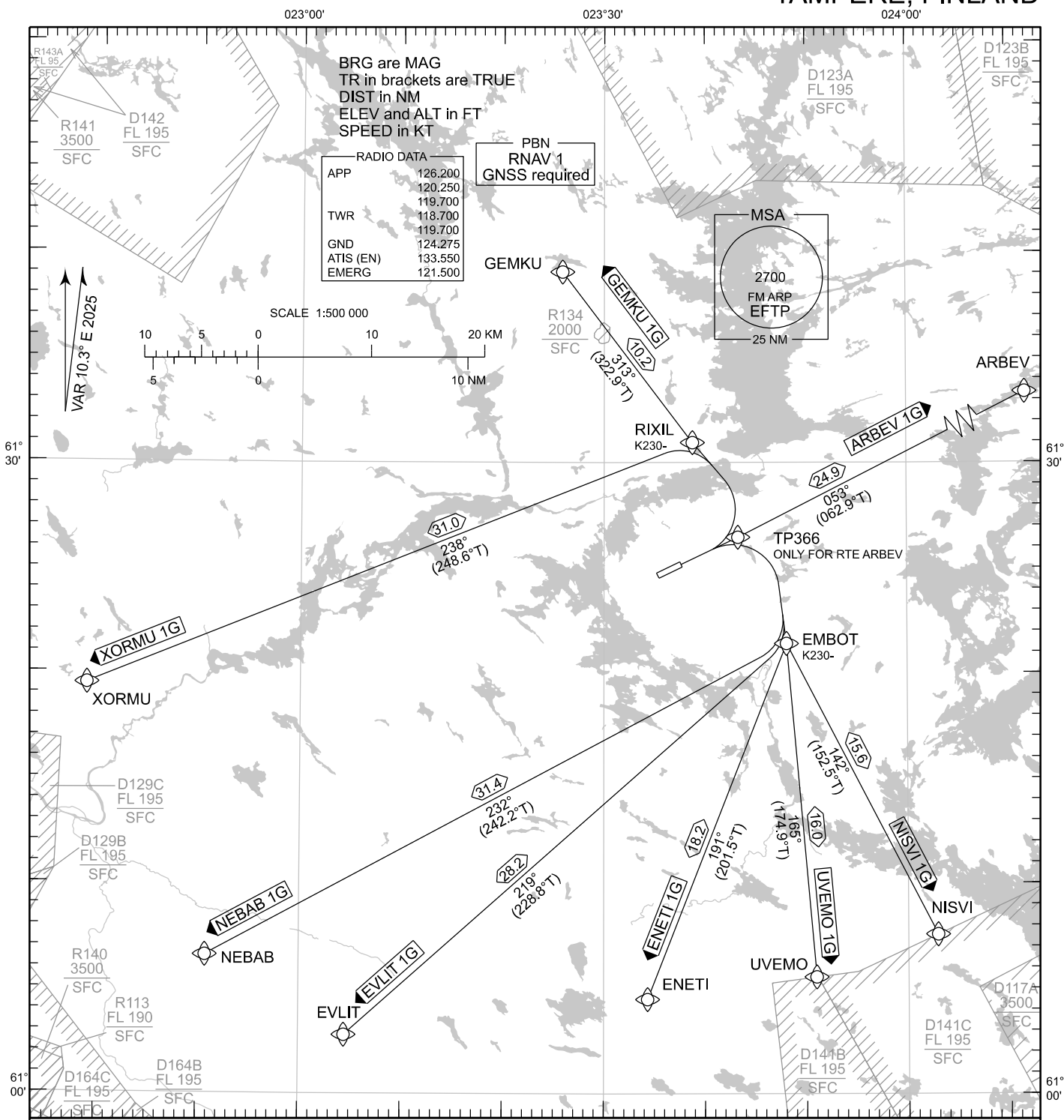
### LIITTEET / APPENDICES:

1. EFTP RNAV SID RWY 06C
2. EFTP OMNIDIRECTIONAL DEPARTURES
3. EFTP RNAV STAR RWY 06C
4. EFTP RNP RWY 06C

STANDARD DEPARTURE CHART  
INSTRUMENT (SID) - ICAO

TRANSITION ALT  
5000

RNAV SID RWY 06C  
TAMPERE-PIRKKALA AERODROME  
TAMPERE, FINLAND



RNAV SID RWY 06C

ARBEV 1G ENETI 1G EVLIT 1G GEMKU 1G NEBAB 1G NISVI 1G UVEMO 1G XORMU 1G

DME/DME OPS: NOT SUPPORTED

ROUTES: RNAV PROC CODING ON THE VERSO OF THE CHART

SQUAWK: WHEN LINING UP SQUAWK THE ASSIGNED CODE

INITIAL CLIMB: MNM TURNING ALTITUDE ACCORDING TO RTE CODING

RADIO CONTACT: MAINTAIN TWR FREQ UNTIL 1500 FT, THEN CONTACT PIRKALA RADAR FREQ 126.200

NOISE ABATEMENT: AFTER TAKE-OFF CLIMB AS RAPIDLY AS PRACTICABLE TO AT LEAST 2000 FT ABOVE AD ELEV  
PUBLISHED SID ROUTES ARE ALSO MINIMUM NOISE ROUTINGS

AREA MNM ALT: SEE AMA INDEX, AIP ENR 6.1 - 3

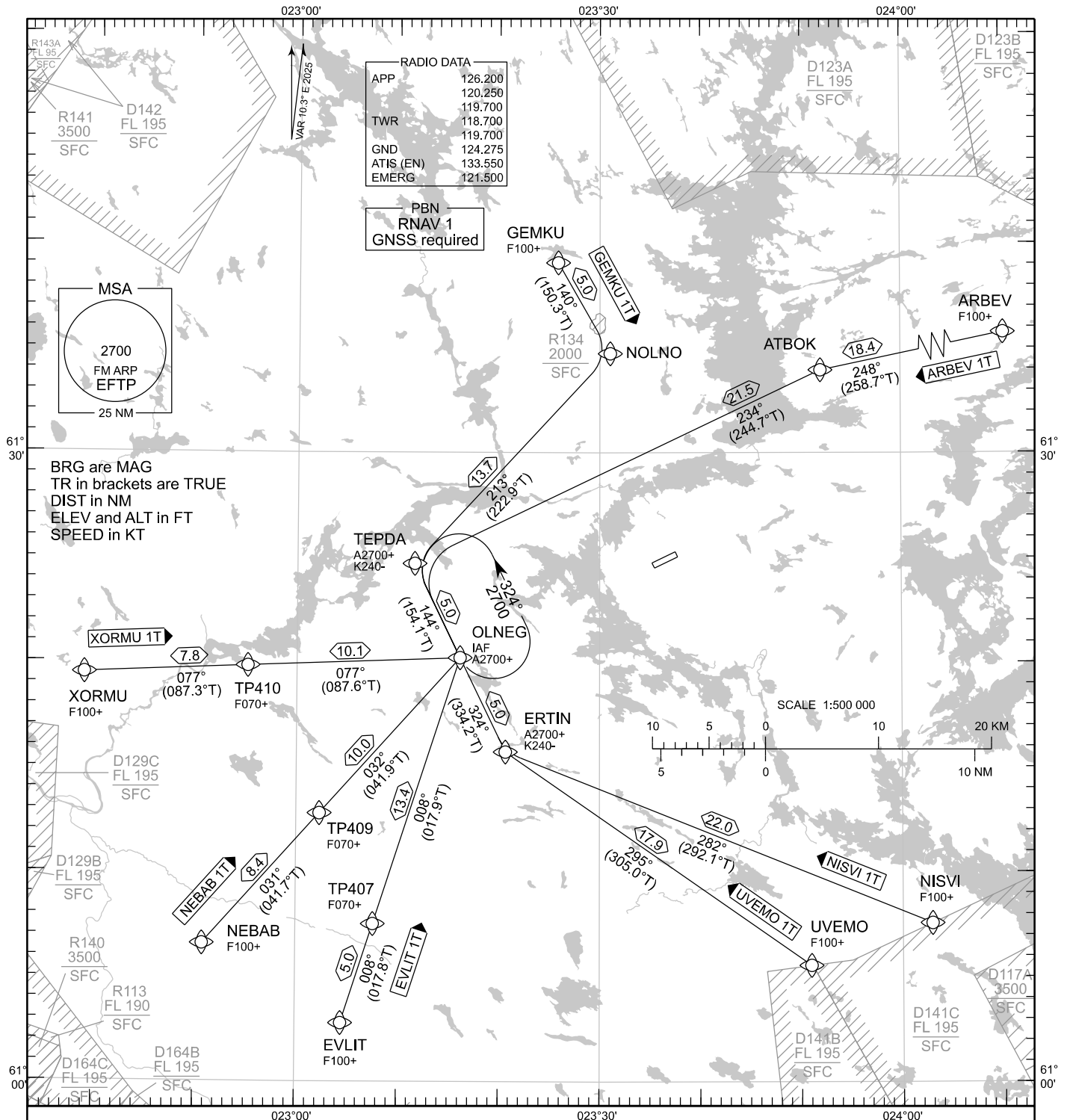
CPDLC: EXPECT FIRST CPDLC DATA LINK AUTHORITY TO BE EFIN

EFTP RNAV SID RWY 06C										
RTE NAV SPEC	SEQ NR	P/T	WPT		MAG	GEO TR	DIST NM	Turn Direction	Constraints	
			ID	Flyover					LVL	Speed
ARBEV 1G RNAV 1	010	CA	-	-	054°	064.3°T	-		A890+	
	020	DF	TP366	-	-	-	-			
	030	TF	ARBEV	-	053°	062.9°T	24.9			
ENETI 1G RNAV 1	010	CA	-	-	054°	064.3°T	-	R	A1100+	
	020	DF	EMBOT	-	-	-	-			K230-
	030	TF	ENETI	-	191°	201.5°T	18.2			
EVLIT 1G RNAV 1	010	CA	-	-	054°	064.3°T	-	R	A1100+	
	020	DF	EMBOT	-	-	-	-			K230-
	030	TF	EVLIT	-	219°	228.8°T	28.2			
GEMKU 1G RNAV 1	010	CA	-	-	054°	064.3°T	-	L	A1100+	
	020	DF	RIXIL	-	-	-	-			K230-
	030	TF	GEMKU	-	313°	322.9°T	10.2			
NEBAB 1G RNAV 1	010	CA	-	-	054°	064.3°T	-	R	A1100+	
	020	DF	EMBOT	-	-	-	-			K230-
	030	TF	NEBAB	-	232°	242.2°T	31.4			
NISVI 1G RNAV 1	010	CA	-	-	054°	064.3°T	-	R	A1100+	
	020	DF	EMBOT	-	-	-	-			K230-
	030	TF	NISVI	-	142°	152.5°T	15.6			
UVEMO 1G RNAV 1	010	CA	-	-	054°	064.3°T	-	R	A1100+	
	020	DF	EMBOT	-	-	-	-			K230-
	030	TF	UVEMO	-	165°	174.9°T	16.0			
XORMU 1G RNAV 1	010	CA	-	-	054°	064.3°T	-	L	A1100+	
	020	DF	RIXIL	-	-	-	-			K230-
	030	TF	XORMU	-	238°	248.6°T	31.0			
<b>WPT COORD</b>										
SEE PAGE EFTP AD 2.15 - 1										

EFTP OMNIDIRECTIONAL DEPARTURES			
RWY	PROC	Controlling OBST	
		Phase	ELEV FT / BRG GEO / DIST NM
06C	Climb straight ahead until MNM turning ALT 890 FT.	PDG	NIL
		TNA	637 / 051° / 3.70 NM FM THR 06C 612656.2N 0234119.8E
24	Climb straight ahead until MNM turning ALT 790 FT. Note 1: Close-in obst exist, total number 3. Note 2: Published close-in obst not considered in PDG.	PDG	NIL
		TNA	NIL

EFTP RWY 06C CLOSE-IN OBSTACLES		
NR	COORD	ELEV FT
	NIL	

EFTP RWY 24 CLOSE-IN OBSTACLES		
NR	COORD	ELEV FT
1.	612437.2N 0233417.9E	484
2.	612436.0N 0233439.1E	456
3.	612439.0N 0233508.8E	424



**RNAV STAR RWY 06C**

ARBEV 1T EVLIT 1T GEMKU 1T NEBAB 1T NISVI 1T UVEMO 1T XORMU 1T

DME/DME OPS:	NOT SUPPORTED	RCF:	SELECT TRANSPONDER CODE 7600
ROUTES:	RNAV PROC CODING ON THE VERSO OF THE CHART ATC WILL GIVE DESCENT CLEARANCES		RNAV STAR HAS BEEN GIVEN AND ACKNOWLEDGED: FOLLOW THE STAR TO THE RESPECTIVE RWY AND EXECUTE IAP AND LAND
WPT CONSTRAINTS:	ALT / FL / SPEED CONSTRAINTS MUST ALWAYS BE FOLLOWED AS PUBLISHED UNLESS EXPLICITLY CANCELLED BY ATC		DURING RADAR VECTORING BEFORE IAF: IN ACCORDANCE WITH THE RULES OF THE AIR
CD OPS:	BY ATC CLR IF TFC PERMITS. PLAN CD PATH ACCORDING TO STAR	AREA MNM ALT:	SEE AMA INDEX, AIP ENR 6.1 - 3
NOISE ABATEMENT:	AVOID OVERFLYING THE CITY OF TAMPERE BELOW 2000		

EFTP RNAV STAR RWY 06C										
RTE NAV SPEC	SEQ NR	P/T	WPT		MAG	GEO TR	DIST NM	Constraints		
			ID	Flyover				LVL	LVL	Speed
ARBEV 1T RNAV 1	010	IF	ARBEV	-	-	-	-	F100+		
	020	TF	ATBOK	-	248°	258.7°T	18.4			
	030	TF	TEPDA	-	234°	244.7°T	21.5	A2700+		K240-
	040	TF	OLNEG	-	144°	154.1°T	5.0	A2700+		
EVLIT 1T RNAV 1	010	IF	EVLIT	-	-	-	-	F100+		
	020	TF	TP407	-	008°	017.8°T	5.0	F070+		
	030	TF	OLNEG	-	008°	017.9°T	13.4	A2700+		
GEMKU 1T RNAV 1	010	IF	GEMKU	-	-	-	-	F100+		
	020	TF	NOLNO	-	140°	150.3°T	5.0			
	030	TF	TEPDA	-	213°	222.9°T	13.7	A2700+		K240-
	040	TF	OLNEG	-	144°	154.1°T	5.0	A2700+		
NEBAB 1T RNAV 1	010	IF	NEBAB	-	-	-	-	F100+		
	020	TF	TP409	-	031°	041.7°T	8.4	F070+		
	030	TF	OLNEG	-	032°	041.9°T	10.0	A2700+		
NISVI 1T RNAV 1	010	IF	NISVI	-	-	-	-	F100+		
	020	TF	ERTIN	-	282°	292.1°T	22.0	A2700+		K240-
	030	TF	OLNEG	-	324°	334.2°T	5.0	A2700+		
UVEMO 1T RNAV 1	010	IF	UVEMO	-	-	-	-	F100+		
	020	TF	ERTIN	-	295°	305.0°T	17.9	A2700+		K240-
	030	TF	OLNEG	-	324°	334.2°T	5.0	A2700+		
XORMU 1T RNAV 1	010	IF	XORMU	-	-	-	-	F100+		
	020	TF	TP410	-	077°	087.3°T	7.8	F070+		
	030	TF	OLNEG	-	077°	087.6°T	10.1	A2700+		

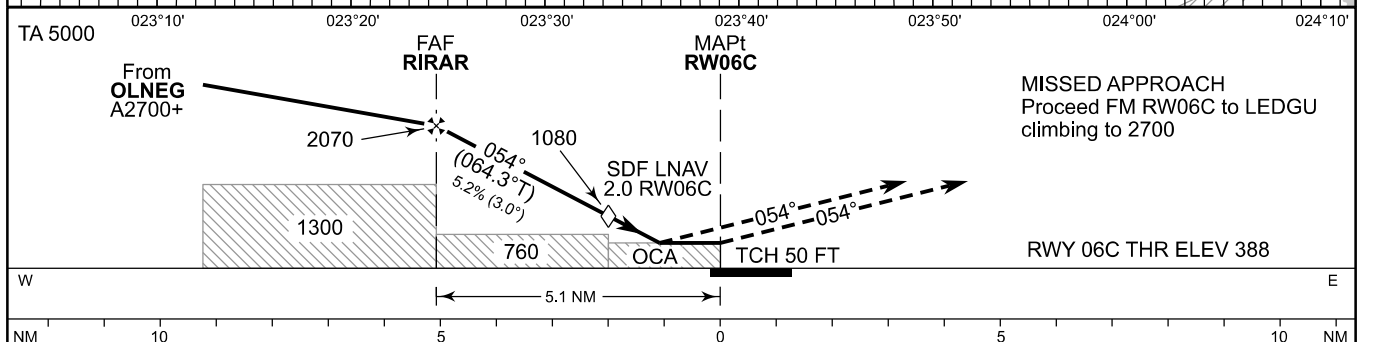
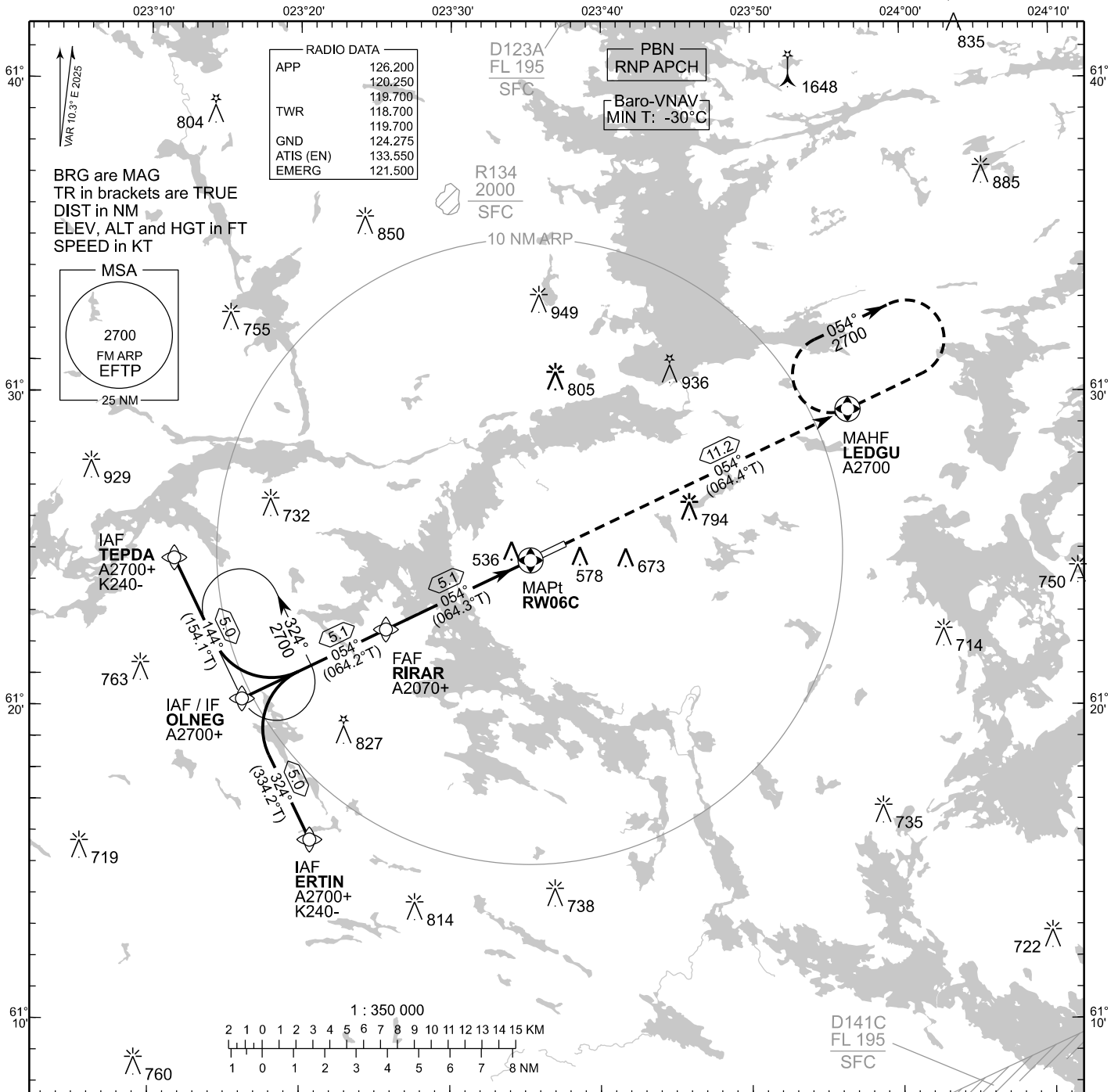
RNAV Holdings							
ID	INBD TR	INBD MAG	Turn Direction	Speed	MNM HLDG LVL	TIME	DIST NM
OLNEG	154.1°T	144°	Left	K230-	A2700	1 MIN	-

WPT COORD
SEE PAGE EFTP AD 2.15 - 1

**INSTRUMENT  
APPROACH CHART - ICAO**

ELEV 391 FT  
HEIGHTS RELATED TO  
THR RWY 06C ELEV 388 FT

**RNP RWY 06C  
TAMPERE-PIRKKALA AERODROME  
TAMPERE, FINLAND**



OCA (H)	A	B	C	D
LNAV/VNAV	644 (256)	656 (268)	666 (278)	676 (288)
LNAV	790 (400)			
Circling	880 (490)	980 (580)	1190 (800)	1200 (810)

	4.0 NM		3.0 NM		2.0 NM	
	kt	min:sec	kt	min:sec	kt	min:sec
DIST FM THR	4.0	3:25	3.0	3:05	2.0	2:12
Altitude (Height)	1710 (1320)		1390 (1010)		1080 (690)	
FAF - MAPt 5.1 NM	min:sec	3:25	3:05	2:34	2:12	1:55
Rate of descent	ft/min	480	530	640	740	850

Timing not authorized for defining the MAPt

EFTP RNP RWY 06C										
PROC ID NAV SPEC	SEQ NR	P/T	WPT			MAG	GEO TR	DIST NM	Constraints	
			ID	Type	Flyover				LVL	Speed
H06C TEPDA RNP APCH	005	IF	TEPDA	IAF	-	144°	154.1°T	5.0	A2700+	K240-
	010	TF	OLNEG	IF	-				A2700+	
	020	TF	RIRAR	FAF	-	054°	064.2°T	5.1	A2070+	
	030	TF	RW06C	MAPt	Y	054°	064.3°T	5.1		
	040	TF	LEDGU	MAHF	Y	054°	064.4°T	11.2	A2700	

EFTP RNP RWY 06C										
PROC ID NAV SPEC	SEQ NR	P/T	WPT			MAG	GEO TR	DIST NM	Constraints	
			ID	Type	Flyover				LVL	Speed
H06C OLNEG RNP APCH	010	IF	OLNEG	IAF/IF	-	054°	064.2°T	5.1	A2700+	
	020	TF	RIRAR	FAF	-				A2070+	
	030	TF	RW06C	MAPt	Y	054°	064.3°T	5.1		
	040	TF	LEDGU	MAHF	Y	054°	064.4°T	11.2	A2700	

EFTP RNP RWY 06C										
PROC ID NAV SPEC	SEQ NR	P/T	WPT			MAG	GEO TR	DIST NM	Constraints	
			ID	Type	Flyover				LVL	Speed
H06C ERTIN RNP APCH	005	IF	ERTIN	IAF	-	324°	334.2°T	5.0	A2700+	K240-
	010	TF	OLNEG	IF	-				A2700+	
	020	TF	RIRAR	FAF	-	054°	064.2°T	5.1	A2070+	
	030	TF	RW06C	MAPt	Y	054°	064.3°T	5.1		
	040	TF	LEDGU	MAHF	Y	054°	064.4°T	11.2	A2700	

RNAV Holdings							
ID	INBD TR	INBD MAG	Turn Direction	Speed	MNM HLDG LVL	TIME	DIST NM
OLNEG	154.1°T	144°	Left	K230-	A2700	1 MIN	-
LEDGU	244.5°T	234°	Right	K230-	A2700	1 MIN	-

WPT COORD	
ID	COORD
TEPDA	612441.81N 0231138.16E
ERTIN	611543.32N 0232040.97E
OLNEG	612012.64N 0231610.21E
RIRAR	612225.38N 0232542.89E
RW06C	612438.02N 0233519.43E
LEDGU	612926.24N 0235627.36E

FINAL APPROACH PARAMETERS			
LNAV Gradient	Baro-VNAV		TCH
	VPA	MNM T	
5.24 % (3.00°)	3.00°	-30°C	50 FT